

Build Trust, Reduce Crime: Implementing Collective Efficacy in Communities

Overview and Implementation Ideas

Dr. Craig D. Uchida
Dr. Shellie E. Solomon
Cmdr. Marlene Pardue (*Ret.*)
MSU Fellows Academy
March 2021

Overview

- Introductions
- Crime Control and Crime Prevention
- Collective Efficacy Defined
 - How does it work in communities?
- What do you do?
- Miami-Dade and Nashville CE Projects



Crime Control and Crime Prevention

- How do we reduce and prevent crime?
- How do we encourage communities, neighborhoods, and people to assist in crime control?
- How do police play a role in this effort?
- How can police increase public trust?



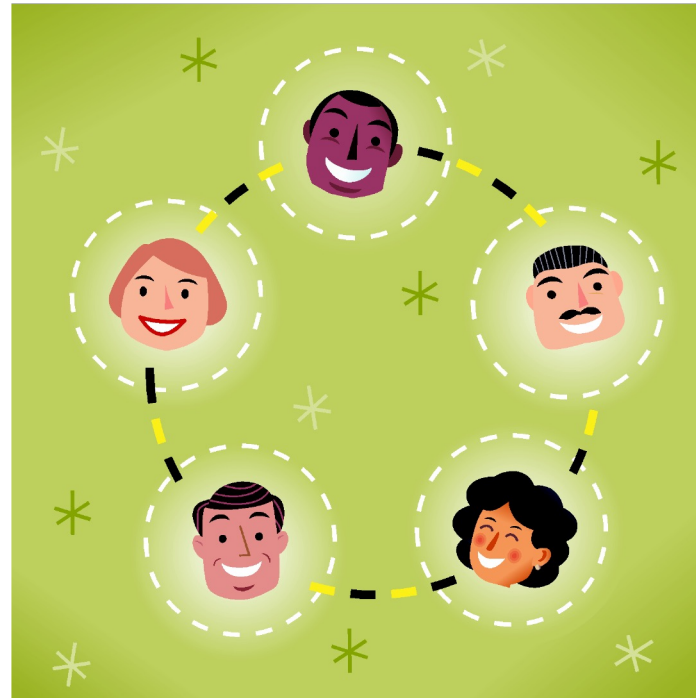
What is the Theory of Collective Efficacy?

Collective efficacy involves:

- Willingness to intervene
- Social cohesion and trust
- Ability to mobilize informal social control

Social Cohesion

- Trust and sense of belonging to a community
- Social investment in a neighborhood



Collective Efficacy

- How willing are residents to take responsibility for what goes on in their neighborhood?



How willing...

...are residents to allow local teenagers to hang out on street corners *and* intimidate passers-by?



What about...

...kids who spray paint graffiti on the walls?

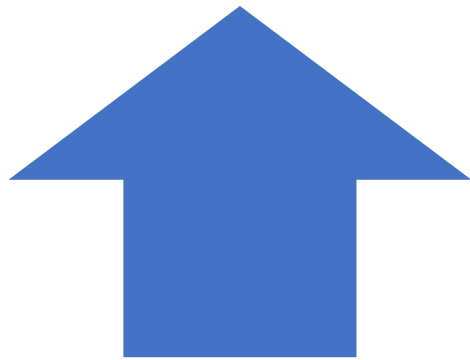


Will residents...

...allow loud arguments or fights to go on in their neighborhoods?



Collective Efficacy



Social Cohesion
and Trust



Crime and
Disorder

Research Bases for Collective Efficacy

A decorative graphic on the left side of the slide, consisting of two overlapping blue shapes: a dark blue parallelogram and a lighter blue trapezoid, both slanted to the right.

What do we know about Collective Efficacy?

The Research Base:

Sampson, et al (1990s)

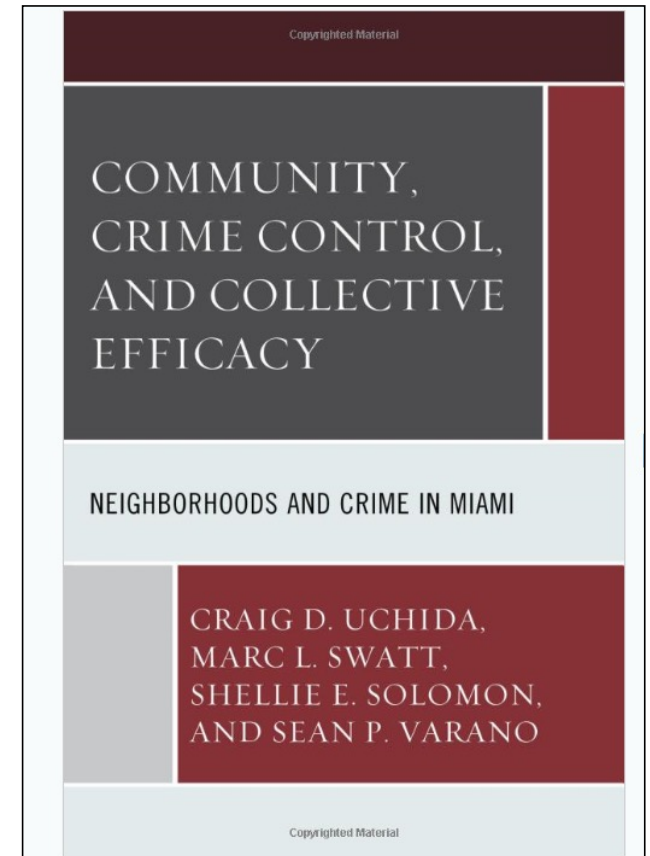
... citizens' willingness to intervene and doing something about incidents have stronger influences than race, ethnicity or income in reducing a neighborhood crime rate ...

What do we know about Collective Efficacy?

The Research Base:

Uchida, Swatt, Solomon & Varano (2015):

- Older residents had higher CE than younger ones
- Residents using neighborhood resources had higher social cohesion
- Poorer residents had lower perceptions of CE

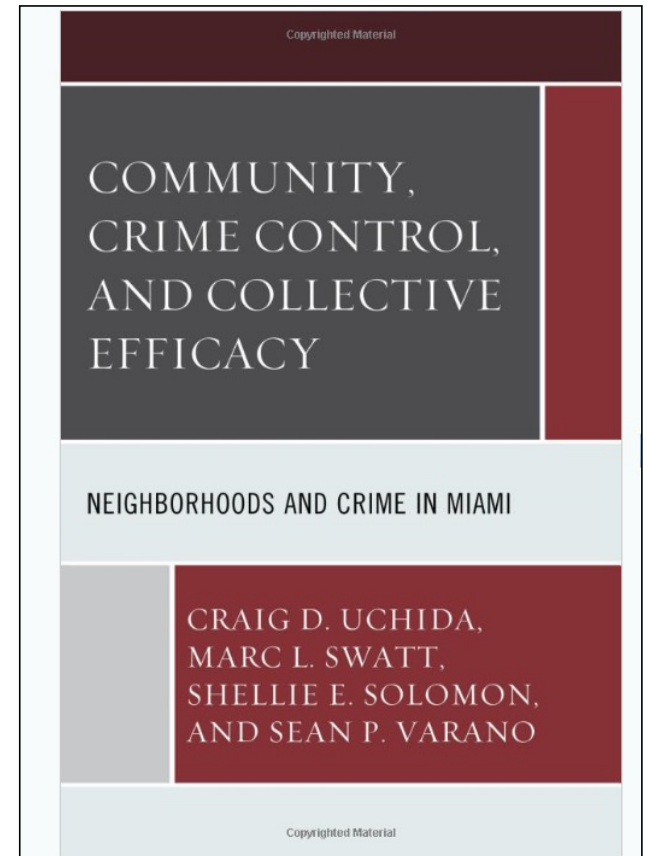


What do we know about Collective Efficacy?

The Research Base:

Uchida, Swatt, Solomon & Varano (2015):

- Residents with high CE had higher satisfaction with police than those with lower CE
- Residents with high social cohesion had lower perceptions of fear of crime

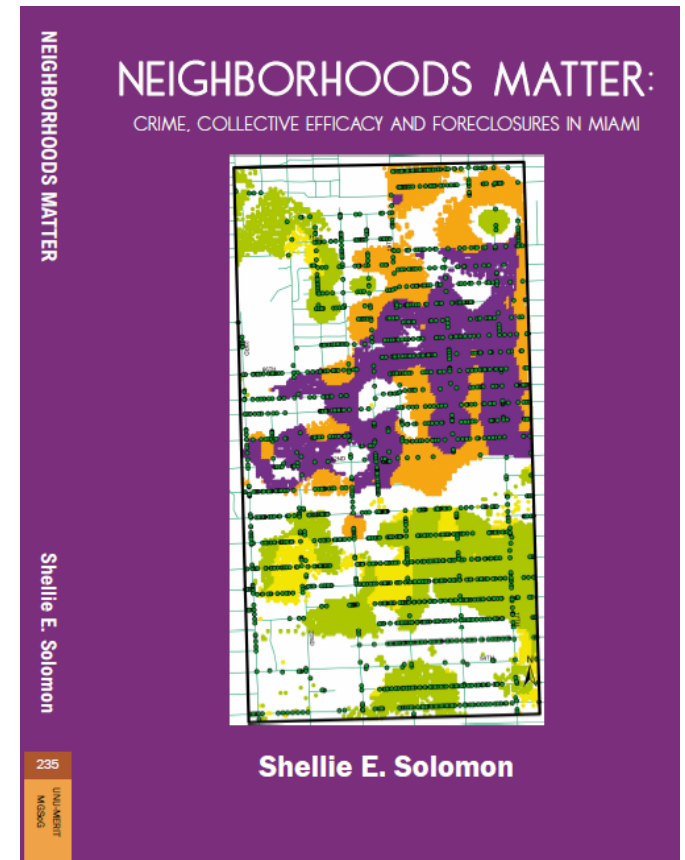


What do we know about Collective Efficacy?

The Research Base:

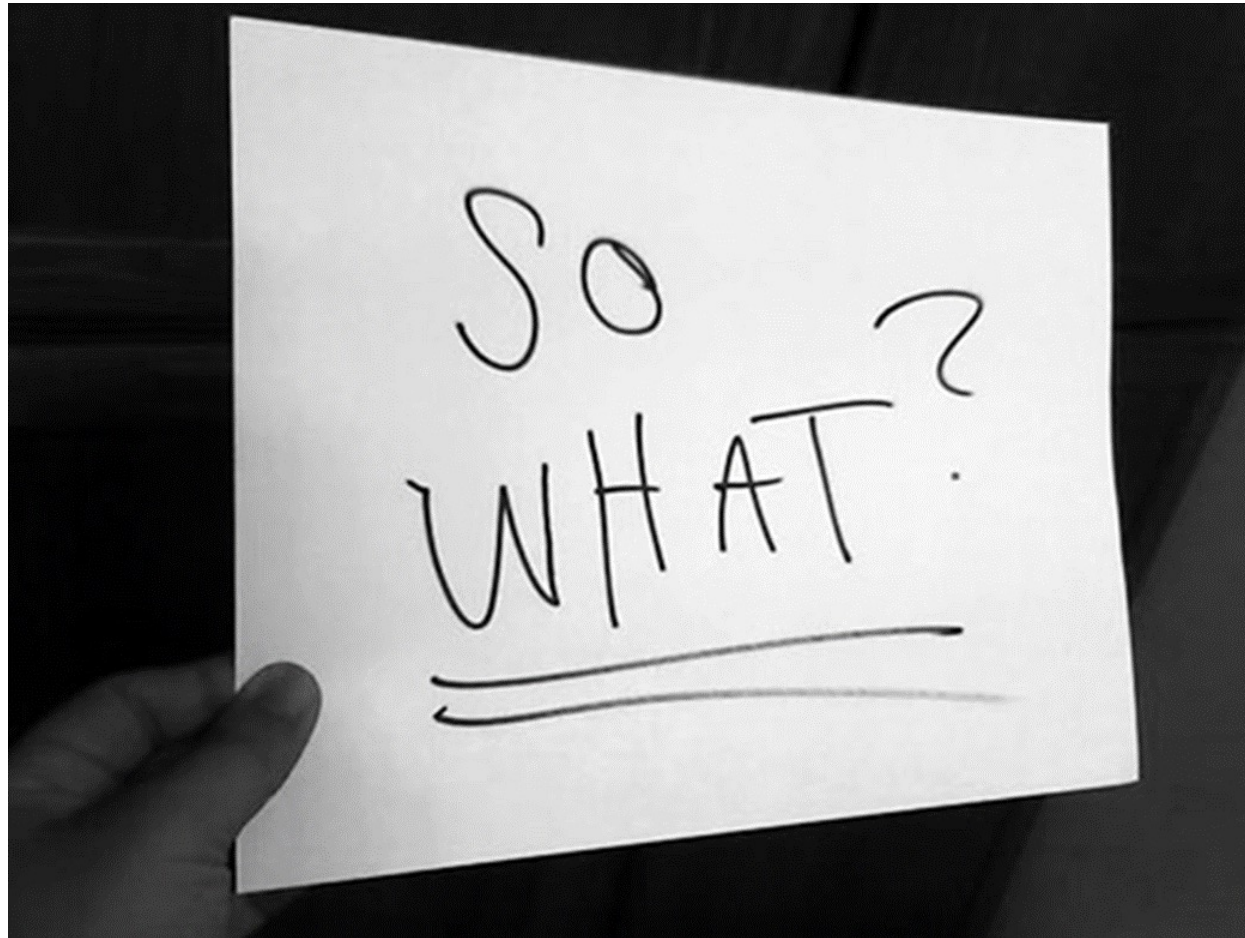
Solomon (2019):

- Re-affirmed that when collective efficacy is high, crime is low and vice versa
- Significant clusters of CE exist in micro-neighborhoods
- Targeting resources in specific areas is better than broader approaches.
- CE mitigates effects of foreclosures on crime



Questions?





How do we implement CE?

- Examples from the field:
 - The Nashville Experience
 - Miami-Dade: A Data-Driven Transformation



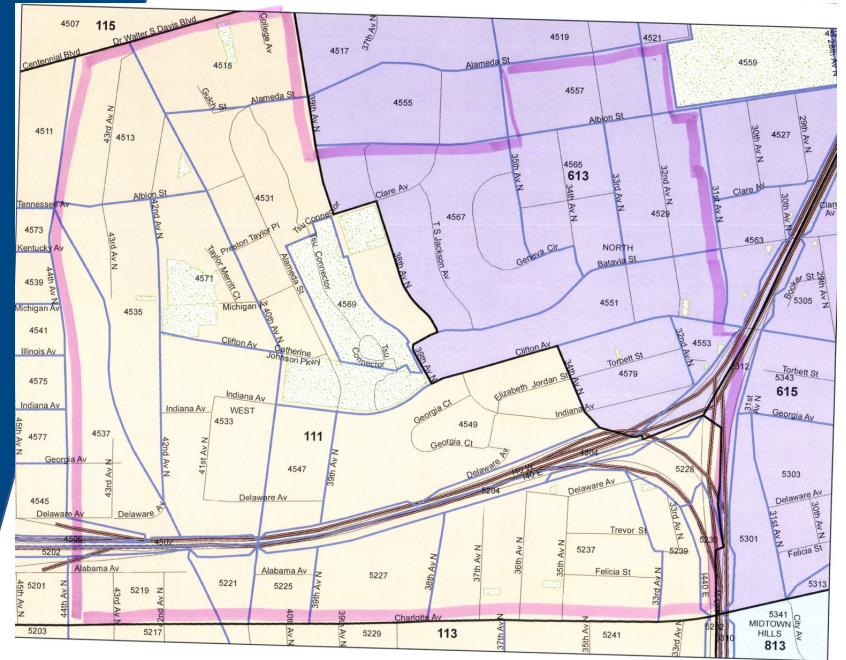
The Nashville Experience

- Implemented CE in 2017-18
- Two districts – West and North
- Successful in West, but less so in North
- Fast forward to 2020 –
- Post-protests; new chief; new directions
- Now – CE is a department wide effort



Lessons learned from 2018

- Do your homework and the prep work
- Understanding and Selecting an area
 - Social issues
 - Crime issues
 - Quality of Life Issues
 - Other issues



Lessons learned from 2018

- Obtain buy-in from stakeholders
- Train command staff, supervisors, and officers
- Develop tools for implementation



Measures of Success in the West Precinct

- Significant crime reduction in the CE area in the first year
 - Continued through current year
- Dramatically increased social cohesion
- Improved relationships between law enforcement and the community



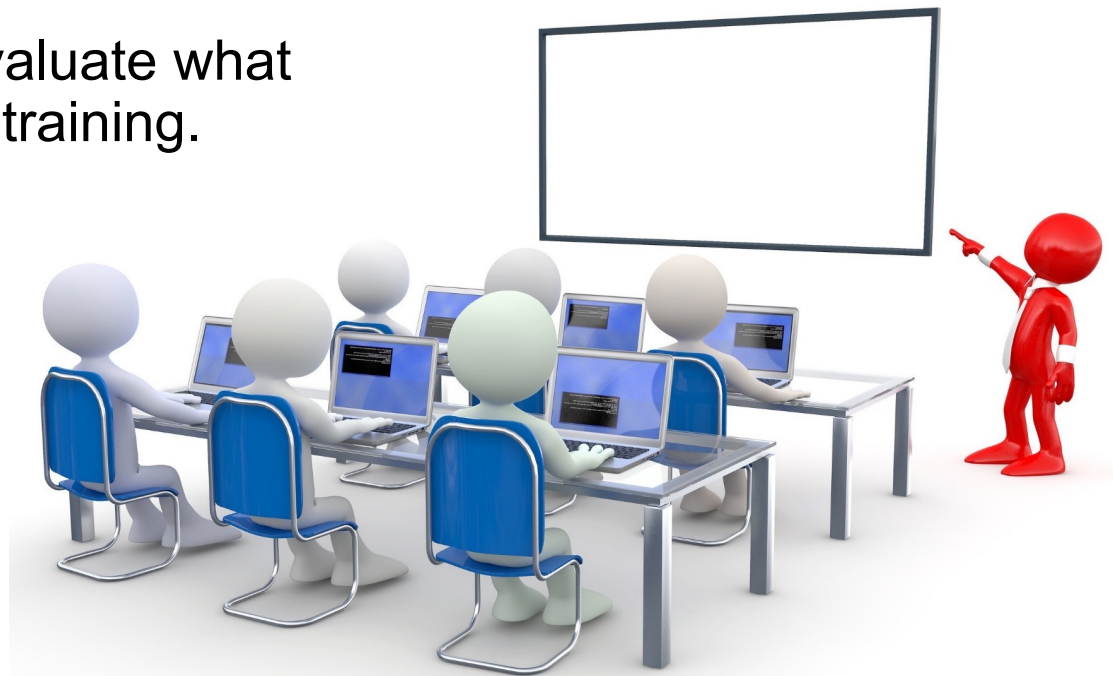
What's Happening Now?

- Conducted Command Staff Training
- Trained the Community Engagement Teams across the Department
- Selected supervisors and officers
- Currently identifying locations and problems by using data and knowledge



What's Happening Now?

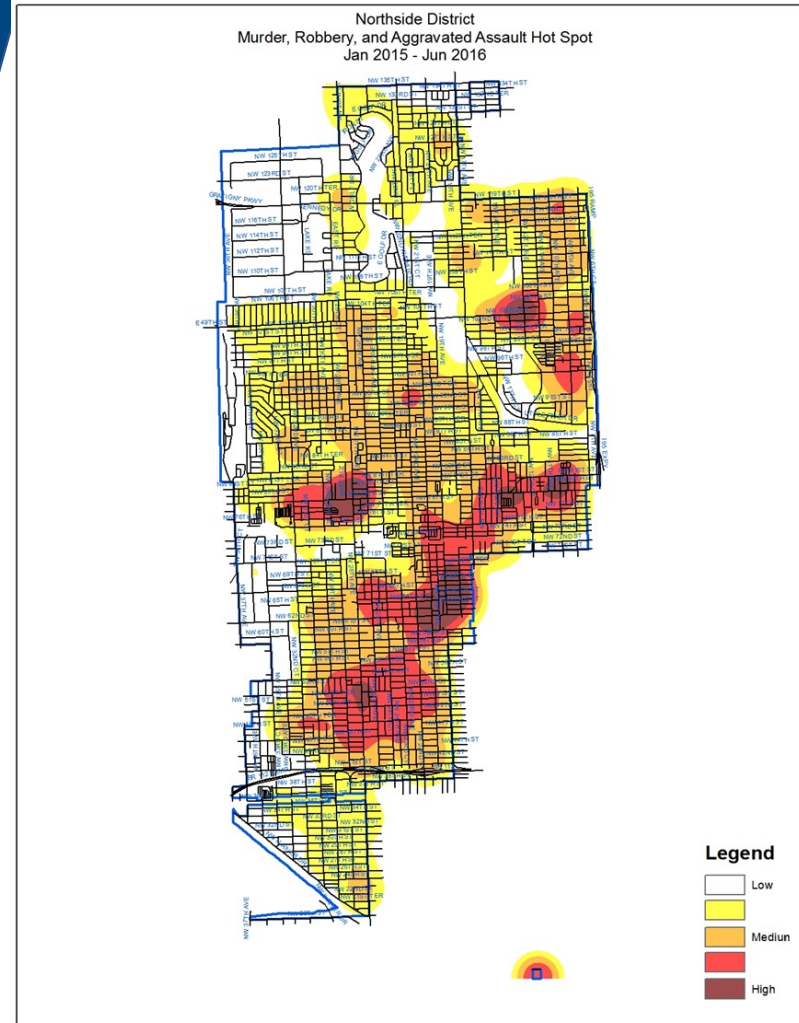
- Teams are in place; officers are starting to interact with people
 - Some teams are having to reevaluate what has been occurring prior to the training.
- Developing solutions
 - Individual Teams / Team meetings



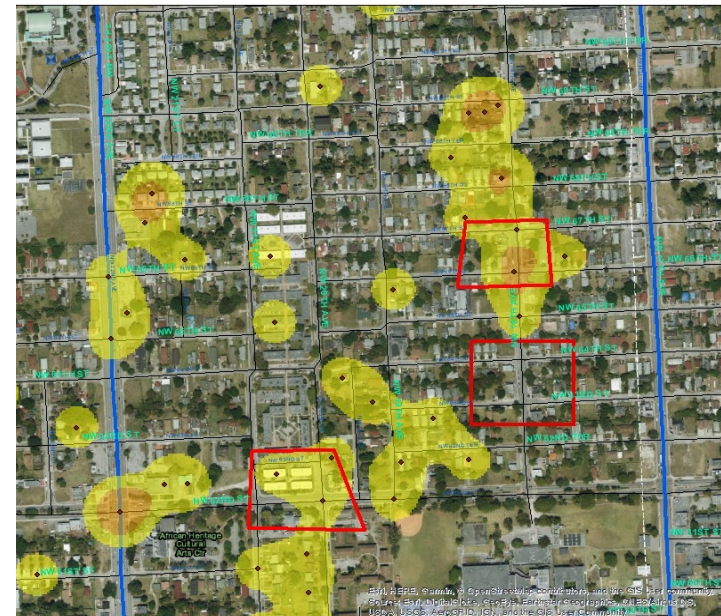
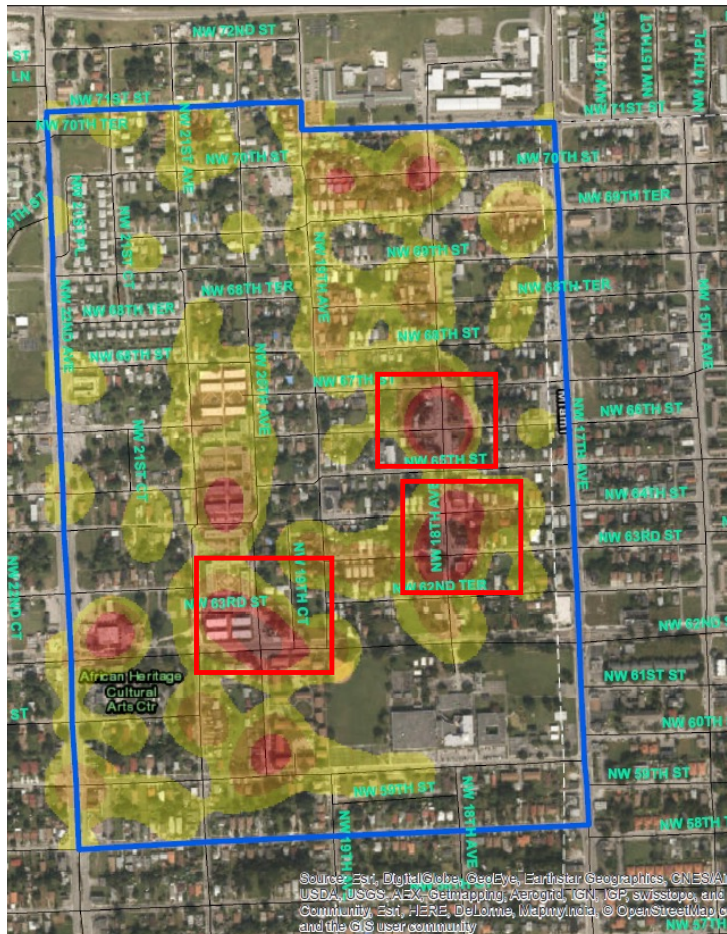
Questions?



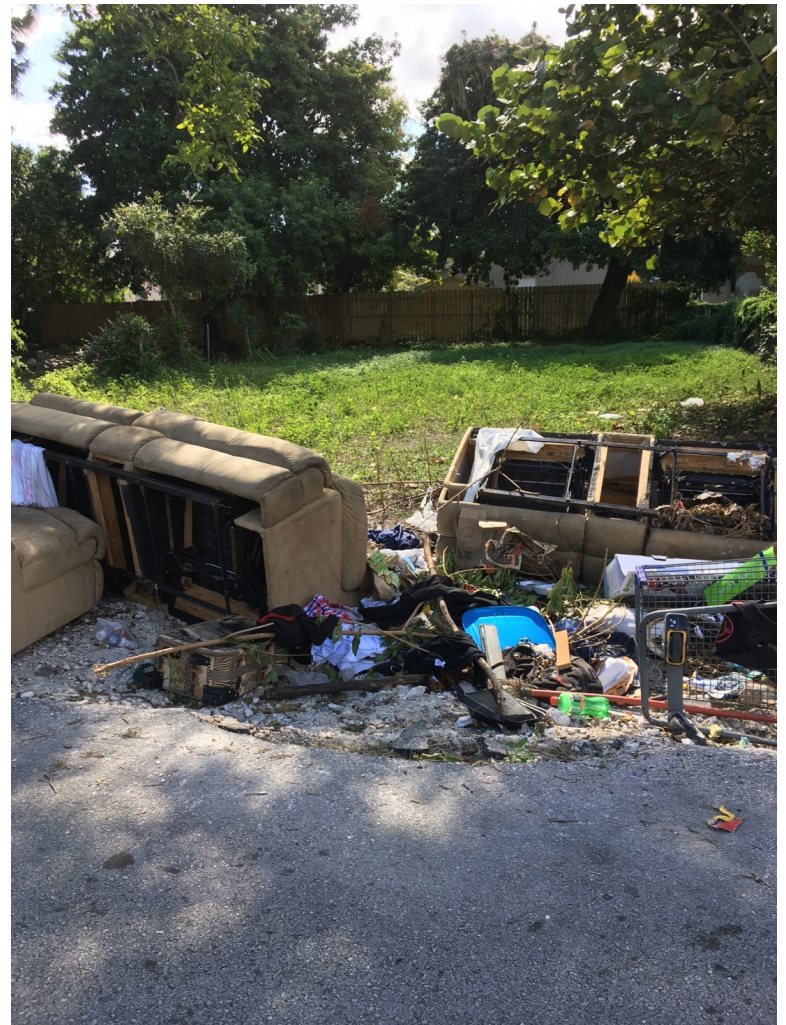
Miami-Dade: A Data-Driven Approach



Miami-Dade



S.S.O.



Miami-Dade



Questions?



Next Steps

- Can you implement CE?
- What type of assistance do you need?



Metro Nashville Police Community Engagement Video



Contact Information

Dr. Craig D. Uchida

cduchida@gmail.com

Dr. Shellie E. Solomon

DrSesolomon@gmail.com

Commander Marlene Pardue (*Ret.*)

Mpardue723@gmail.com

